

CivicSight 7.0

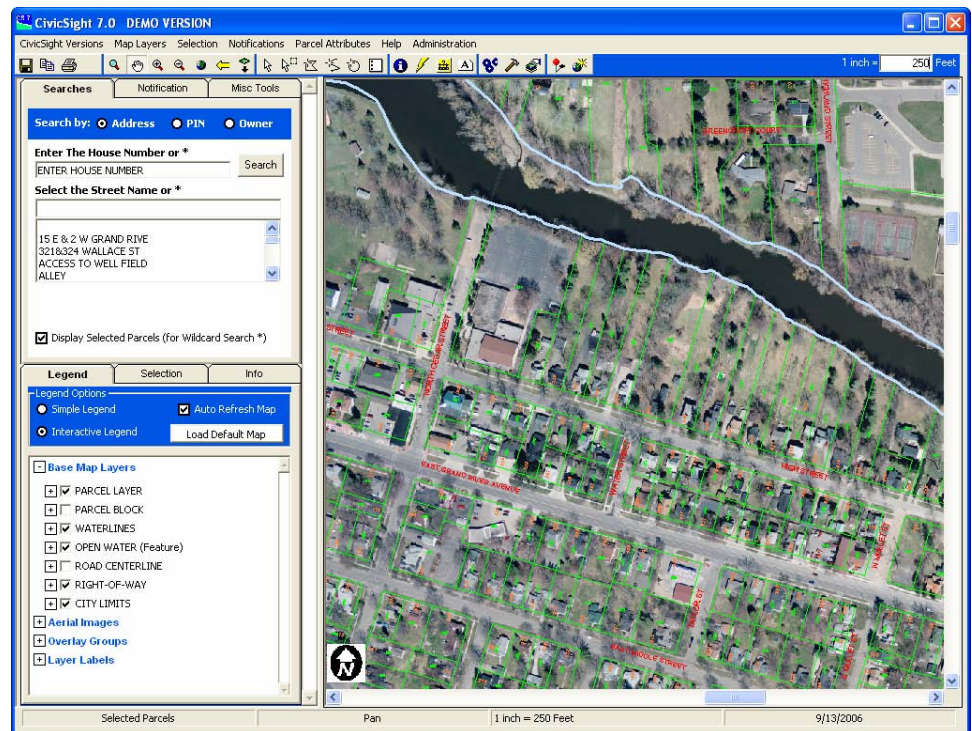
What is CivicSight?

CivicSight is a GIS data viewer and query software built using Visual Basic and ESRI MapObjects LT 2.0. With this release of CivicSight, the administration module supports personal and SDE geodatabases. ArcGIS is not required by CivicSight to function.

CivicSight 7.0 Features

- Unlimited deployments within your organization.
- Simple and quick Installation
- Easy to use administration tool.
- Network, Local Computer, CD-Rom deployment options.
- CivicSight Support and Download web site.
- Comprehensive User and Administrator manuals.
- Supports many ESRI, Image, and CAD formats including; Shapefile, ArcInfo Coverages, Mr. SID, TIF, AutoCad DWG & DXF, and Microstation DGN.
- ESRI Geodatabase formats supported via built in conversion utility.
- Incorporates one-to-many database relationships.
- Create multiple data versions for CivicSight to read.
- Update your data and CivicSight data versions with a few clicks of the mouse or automatic backups can be run through task manager.
- Interactive Legend, toggle layer visibility.
- CivicSight is entirely read-only, so users cannot alter or corrupt any of the data.
- Manage Laptop versions with a few clicks of the mouse.

CivicSight 7.0 - Main Window



CivicSight 7.0 - Key Functionality

Address, Owner, and Tax ID searches - Search for a parcel by one of these query types.

Parcel Buffering - Select parcels with a user defined buffer radius.

Mailing Labels - Generate mailing labels from selected parcels.

Printing - Print the current map with options to include a legend, comments, or information about the selected parcel.

Hotlinks - Generate hotlinks to virtually any document or image associated with a layer in CivicSight. Custom link to popular document imaging solutions.

Reporting - Administrator report designer, create multiple reports for CivicSight users.

Query Builder - Search any of the layers or databases with this flexible query builder.

Select by Layer - Select features from one layer using the selected features of another layer.

Label Points - Place label points on your map for added information.

Measurement Tools - Use one of four (4) measurement tools to derive area or length from the map.

Additional tools include saving maps, export attribute data to text or Excel formats, and more...

CivicSight 7.0 - Additional Information



CivicSight Toolbars

Save Map, Copy Map, Email Map, Print Preview

Zoom, Pan, Zoom in, Zoom out, Zoom to full extent, Zoom previous, Zoom to selected

Single selection, Box selection, Polygon selection, Circle selection, Line selection, Clear selection

Identify Tool, Hotlink Tool, Measurement Tools, Label Points

On-Click notifications, Query Builder, Layer on Layer selection

Map Tips (Tax ID for Parcel Layer), Reference Map

CivicSight Data Wizard—Administration of Map Layers, Databases, Hotlinks, Notifications, More...

Map Layer Administration

Field Name	Field Alias	Display?	Description
SHAPE_AREA	SHAPE_AREA	False	Undefined...
TABELINK	TABELINK	True	Undefined...
FEATUREID	FEATUREID	False	Undefined...
SHAPE_LEN	SHAPE_LEN	False	Undefined...
TAX ID	TAX ID	True	Undefined...
SHAPF	SHAPF	False	Undefined...

Database Administration

Alias	Name	Property	Property Value	Description
WATERBILLING	WATERBILLING	Database Table	PARCELATTRIBUTE	Database Source T
PARCELATTRIBUTE	PARCELATTRIBUTE	Database Source	P:\GIS\02_Data\City_Parcels\Land...	Database Source
		CS DB Source	C:\CS\01_CivicSight\CivicSight 7.0...	CivicSight Source F
		Database Type	Access Database	Type of Database
		Last Update Date	8/28/2006 9:00:02 AM	Last Update
		Database Alias	PARCEL_ATTRIBUTE	Database Alias Name
		Database Link Field	PAR_PARCELNUMBER	Set Unique Field to I
		Map Layer	TAXPARCELS	Set map layer the d
		Map Layer Link Field	ID	Set Map Layer the c
		Defined Relationships	False	Indicates if there ar

Field Name	Field Alias	Index?	Display?	Legal?	Quick Re...	Description
OBJECTID	OBJECTID	False	True	False	False	Field Description:
Par_ParcelNumber	Par_ParcelNum...	False	True	False	False	Field Description:
Mst_OwnerName1	Mst_OwnerNa...	False	True	False	False	Field Description:
Mst_OwnerName2	Mst_OwnerNa...	False	True	False	False	Field Description:
Mst_OwnerStreetA...	Mst_OwnerStr...	False	True	False	False	Field Description:
Mst_OwnerCity	Mst_OwnerCity	False	True	False	False	Field Description:
Mst_OwnerState	Mst_OwnerState	False	True	False	False	Field Description:
Mst_OwnerZipCode	Mst_OwnerZip...	False	True	False	False	Field Description:
Mst_PropAddressN...	Mst_PropAddre...	False	True	False	False	Field Description:
Mst_PropAddressDir	Mst_PropAddre...	False	True	False	False	Field Description:
Mst_PropAddressCl	Mst_PropAddre...	False	True	False	False	Field Description:

The CivicSight Data Wizard in conjunction with an ArcView 9.1 will support personal geodatabase and SDE geodatabase feature classes, including annotation. It takes one administrator to build and publish CivicSight layers and databases for an unlimited number of GIS users. Laptop data versions are now supported with an easy to use interface.

- Use CivicSight as a map interface for BS&A Building Department System (permits)!
- Create Laptop versions to run from the hard drive or a CD-ROM, DVD-ROM!
- Create individual CivicSight data versions for departments in your organization!

Contact River's Edge to receive a demo of CivicSight. Ask about how your data can be included into a demo that can run from a standard DVD-ROM or CD-ROM.

River's Edge GIS, LLC.

Joel Lenz
River's Edge GIS, LLC
2483 Bravender Road
Williamston, Michigan 48895
Phone: 616.481.1861

Fax: 517.655.1025
Email: info@riversedgegis.com
WWW: www.riversedgegis.com